

Discharge Measurement Summary

Site name ECanal9
Site number 02
Operator(s) VAllen
File name EastCanal_20230728_0853.ft
Comment

Start time	7/28/2023 8:53 AM	Sensor type	Top Setting
End time	7/28/2023 9:32 AM	Handheld serial number	FT2H2219029
Start location latitude	42.809	Probe serial number	FT2P2219014
Start location longitude	-118.869	Probe firmware	1.30
Calculations engine	FlowTracker2	Handheld software	1.7

# Stations	Avg interval (s)	Total discharge (m³/s)
30	40	0.7723

Total width (m)	Total area (m²)	Wetted Perimeter (m)
3.627	1.63992	4.369

Mean SNR (dB)	Mean depth (m)	Mean velocity (m/s)
29	0.452	0.4710

Mean temp (°C)	Max depth (m)	Max velocity (m/s)
15.302	0.503	0.6131

Discharge Uncertainty		
Category	ISO	IVE
Accuracy	1.0%	1.0%
Depth	0.1%	1.3%
Velocity	0.3%	0.6%
Width	0.1%	0.1%
Method	1.5%	
# Stations	1.7%	
Overall	2.5%	1.8%

Discharge equation	Mid Section
Discharge uncertainty	IVE
Discharge reference	Rated

Data Collection Settings	
Salinity	0.000 PSS-78
Temperature	-
Sound speed	-
Mounting correction	0.000 %

Summary overview

No changes were made to this file
Quality control warnings



Discharge Measurement Summary

Site name ECanal9
Site number 02
Operator(s) VAllen
File name EastCanal_20230728_0853.ft
Comment

Station Warning Settings

Station discharge OK

Station discharge < 5.00%

Station discharge caution

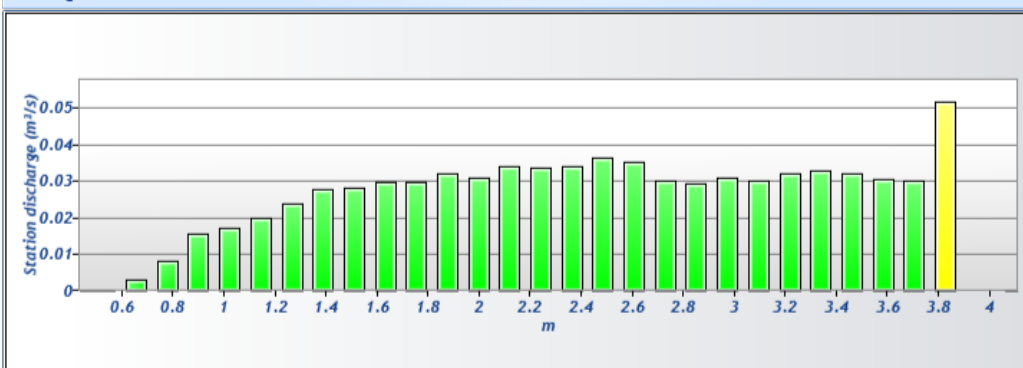
5.00% >= Station discharge < 10.00%

Station discharge warning

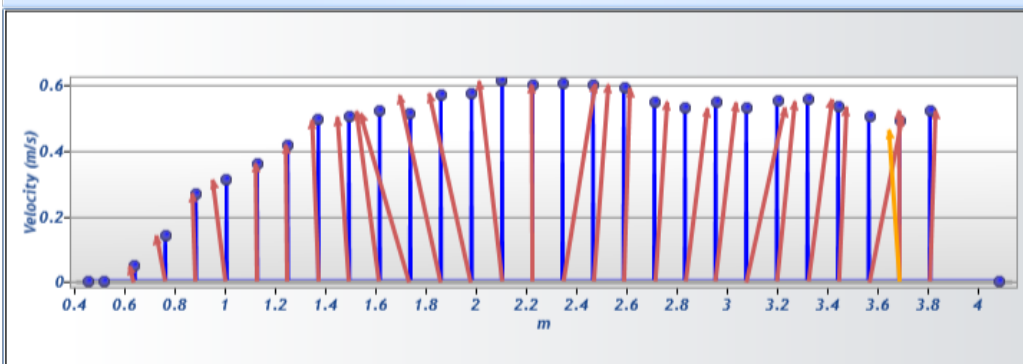
Station discharge >= 10.00%



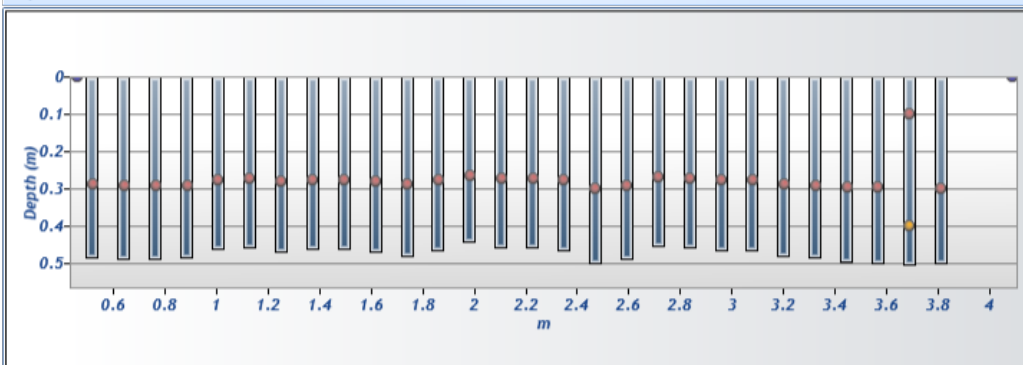
Discharge chart

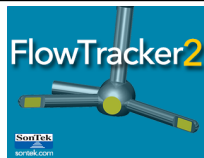


Velocity chart



Depth chart

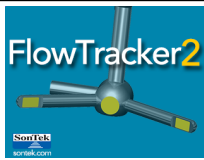




Discharge Measurement Summary

Site name ECanal9
Site number 02
Operator(s) VAllen
File name EastCanal_20230728_0853.ft
Comment

Measurement results													
St#	Time	Location (m)	Method	Depth (m)	%Depth	Measured Depth (m)	Samples	Velocity (m/s)	Correcti on	Mean Velocity (m/s)	Area (m ²)	Flow (m ³ /s)	%Q
0	8:53 AM	0.457	None	0.000	0.0000	0.000	0	0.0000	1.0000	0.0001	0.00000	0.0000	0.00 ✓
1	8:53 AM	0.518	0.6	0.482	0.6000	0.289	80	0.0001	1.0000	0.0001	0.04404	0.0000	0.00 ✓
2	8:55 AM	0.640	0.6	0.488	0.6000	0.293	80	0.0497	1.0000	0.0497	0.05946	0.0030	0.38 ✓
3	8:57 AM	0.762	0.6	0.488	0.6000	0.293	80	0.1398	1.0000	0.1398	0.05946	0.0083	1.08 ✓
4	8:58 AM	0.884	0.6	0.485	0.6000	0.291	80	0.2689	1.0000	0.2689	0.05909	0.0159	2.06 ✓
5	8:59 AM	1.006	0.6	0.460	0.6000	0.276	80	0.3104	1.0000	0.3104	0.05611	0.0174	2.26 ✓
6	9:01 AM	1.128	0.6	0.457	0.6000	0.274	80	0.3611	1.0000	0.3611	0.05574	0.0201	2.61 ✓
7	9:02 AM	1.250	0.6	0.469	0.6000	0.282	80	0.4193	1.0000	0.4193	0.05723	0.0240	3.11 ✓
8	9:03 AM	1.372	0.6	0.460	0.6000	0.276	80	0.4944	1.0000	0.4944	0.05611	0.0277	3.59 ✓
9	9:05 AM	1.494	0.6	0.460	0.6000	0.276	80	0.5042	1.0000	0.5042	0.05611	0.0283	3.66 ✓
10	9:06 AM	1.615	0.6	0.469	0.6000	0.282	80	0.5215	1.0000	0.5215	0.05723	0.0298	3.86 ✓
11	9:07 AM	1.737	0.6	0.479	0.6000	0.287	80	0.5142	1.0000	0.5142	0.05834	0.0300	3.88 ✓
12	9:09 AM	1.859	0.6	0.463	0.6000	0.278	80	0.5697	1.0000	0.5697	0.05649	0.0322	4.17 ✓
13	9:10 AM	1.981	0.6	0.442	0.6000	0.265	80	0.5760	1.0000	0.5760	0.05388	0.0310	4.02 ✓
14	9:12 AM	2.103	0.6	0.457	0.6000	0.274	80	0.6131	1.0000	0.6131	0.05574	0.0342	4.42 ✓
15	9:13 AM	2.225	0.6	0.457	0.6000	0.274	80	0.6033	1.0000	0.6033	0.05574	0.0336	4.35 ✓
16	9:14 AM	2.347	0.6	0.463	0.6000	0.278	80	0.6052	1.0000	0.6052	0.05649	0.0342	4.43 ✓
17	9:15 AM	2.469	0.6	0.500	0.6000	0.300	80	0.6027	1.0000	0.6027	0.06094	0.0367	4.76 ✓
18	9:17 AM	2.591	0.6	0.488	0.6000	0.293	80	0.5919	1.0000	0.5919	0.05946	0.0352	4.56 ✓
19	9:18 AM	2.713	0.6	0.451	0.6000	0.271	80	0.5492	1.0000	0.5492	0.05500	0.0302	3.91 ✓
20	9:19 AM	2.835	0.6	0.457	0.6000	0.274	80	0.5303	1.0000	0.5303	0.05574	0.0296	3.83 ✓
21	9:20 AM	2.957	0.6	0.463	0.6000	0.278	80	0.5475	1.0000	0.5475	0.05649	0.0309	4.00 ✓
22	9:22 AM	3.078	0.6	0.463	0.6000	0.278	80	0.5328	1.0000	0.5328	0.05649	0.0301	3.90 ✓
23	9:23 AM	3.200	0.6	0.479	0.6000	0.287	80	0.5509	1.0000	0.5509	0.05834	0.0321	4.16 ✓
24	9:24 AM	3.322	0.6	0.485	0.6000	0.291	80	0.5579	1.0000	0.5579	0.05909	0.0330	4.27 ✓
25	9:25 AM	3.444	0.6	0.494	0.6000	0.296	80	0.5350	1.0000	0.5350	0.06020	0.0322	4.17 ✓
26	9:26 AM	3.566	0.6	0.497	0.6000	0.298	80	0.5045	1.0000	0.5045	0.06057	0.0306	3.96 ✓
27	9:28 AM	3.688	0.2/0.8	0.503	0.2000	0.101	80	0.5229	1.0000	0.4935	0.06132	0.0303	3.92 ✓
27	9:28 AM	3.688	0.2/0.8	0.503	0.8000	0.402	80	0.4640	1.0000	0.4935	0.06132	0.0303	3.92 ✓
28	9:30 AM	3.810	0.6	0.500	0.6000	0.300	80	0.5222	1.0000	0.5222	0.09903	0.0517	6.70 ✓
29	9:32 AM	4.084	None	0.000	0.0000	0.000	0	0.0000	1.0000	0.5222	0.00000	0.0000	0.00 ✓

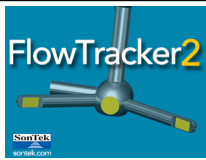


Discharge Measurement Summary

Site name ECanal9
Site number 02
Operator(s) VAllen
File name EastCanal_20230728_0853.ft
Comment

Quality Control Settings	
Maximum depth change	50.00%
Maximum spacing change	100.00%
SNR threshold	10 dB
Standard error threshold	0.0100 m/s
Spike threshold	10.00%
Maximum velocity angle	20.0 deg
Maximum tilt angle	5.0 deg

Quality control warnings							
St#	Time	Location (m)	Method	Depth (m)	%Depth	Measured Depth (m)	Warnings
1	8:53 AM	0.518	0.6	0.482	0.6000	0.289	Water Depth > QC,High % Spikes
3	8:57 AM	0.762	0.6	0.488	0.6000	0.293	Large SNR Variation
11	9:07 AM	1.737	0.6	0.479	0.6000	0.287	Velocity Angle > QC
29	9:32 AM	4.084	None	0.000	0.0000	0.000	Stn Spacing > QC,Water Depth > QC



Discharge Measurement Summary

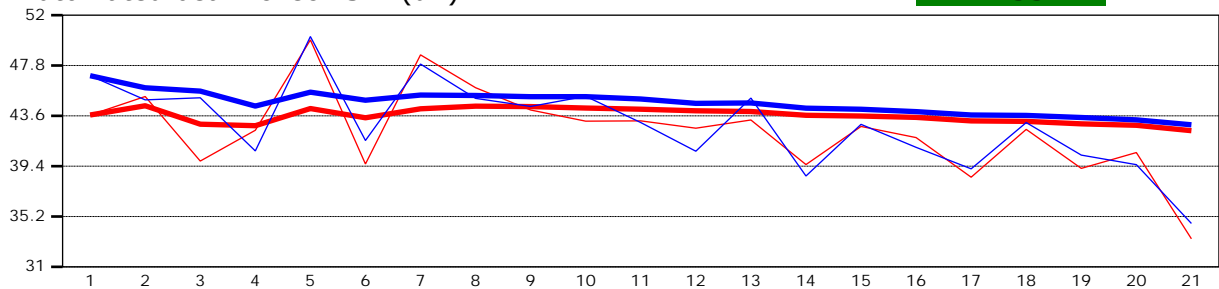
Site name ECanal9
Site number 02
Operator(s) VAllen
File name EastCanal_20230728_0853.ft
Comment

Beam 1	
Beam 2	

Automated beam check Start time 7/28/2023 8:52:15 AM

Automated beam check SNR(dB)

PASS



Automated beam check Noise level(cnts)

PASS



Automated beam check Quality control warnings

No quality control warnings



Discharge Measurement Summary

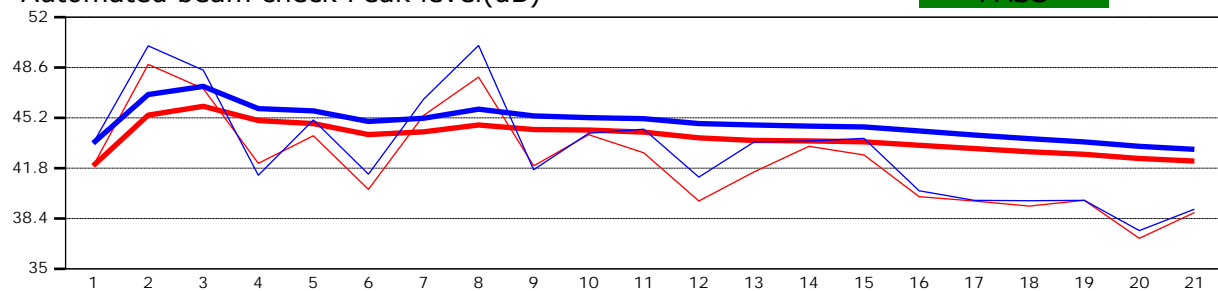
Site name ECanal9
Site number 02
Operator(s) VAllen
File name EastCanal_20230728_0853.ft
Comment

Beam 1	
Beam 2	

Automated beam check Start time 7/28/2023 8:52:15 AM

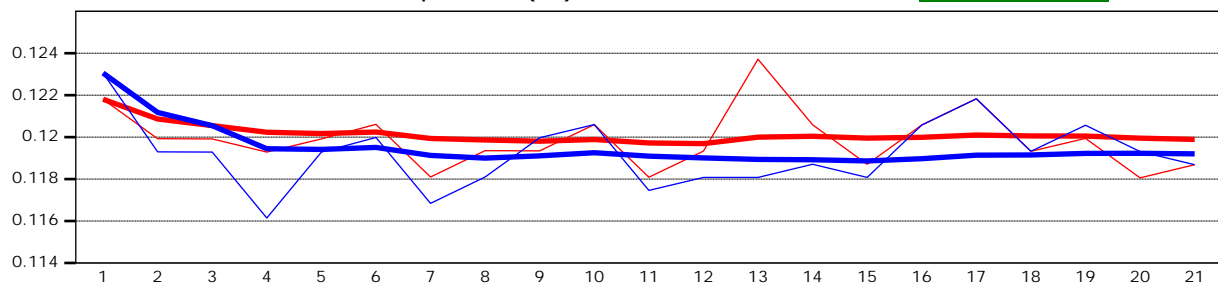
Automated beam check Peak level(dB)

PASS



Automated beam check Peak position(m)

PASS



Automated beam check Quality control warnings

No quality control warnings